

Main Request for Funding Form

Lessard-Sams Outdoor Heritage Council Fiscal Year 2014 / ML 2013 Proposal

Program or Project Title: Preventing Forest Fragmentation and Protecting and Restoring Lake and Stream Habitat in the St. Louis River Watershed

Funds Requested: \$2,476,000

Manager's Name: Thomas Howes

Title: Natural Resources Manager

Organization: Fond du Lac Band of Lake Superior Chippewa

Street Address: 1720 Big Lake Road

City: Cloquet, MN 55720

Telephone: 218.878.7163

E-Mail: thomashowes@fdlrez.com

Organization Web Site: www.fdlrez.com

County Locations: St. Louis,

Ecological Planning Regions:

- Northern Forest

Activity Type:

- Restore
- Enhance
- Protect in Fee

Priority Resources Addressed by Activity:

- Wetlands
- Forest
- Prairie
- Habitat

Abstract

This project will prevent forest fragmentation and protect and restore lake and stream habitat in the St. Louis River watershed through the fee acquisition of 720 acres and the restoration and enhancement of 271 acres of forests, prairie, and wetlands.

Activity Detail

Design and Scope of Work

The Fond du Lac Band of Lake Superior Chippewa is pleased to present this proposal to prevent forest fragmentation and to protect and restore lake and stream habitat in the St. Louis River watershed through the fee acquisition of 720 acres and the restoration and enhancement of 271 acres of forests, prairie, and wetlands. This project addresses three problems: (1) protecting the water quality of the St. Louis River, (2) providing opportunities for public fishing and hunting, and (3) preventing forest fragmentation.

I. Priority Property: Chi-wizo zaaga'iganing (Simian Lake)

The priority for this project is the acquisition of a 440-acre property ("Priority Property"), which is one of the largest privately owned properties within the Fond du Lac Reservation. This is the priority for two reasons: (1) there is substantial urgency because the property is being marketed by a real estate broker and (2) its acquisition will address all three problems identified above.

A. Protecting the St. Louis River

The Priority Property contains 83 acres of wetlands and an 80-acre lake, Chi-wizo zaaga'iganing (also known as Simian Lake), which drains into the St. Louis River. Preventing development of this lake will contribute to the restoration efforts of the St. Louis River by eliminating potential sources of sediment and nutrient loads into the aquatic environment.

B. Protecting a High-Priority Fishery and Providing for Public Fishing and Hunting

Chi-wizo zaaga'iganing (Simian Lake) is classified as a high-priority fishery and contains northern pike, crappie, blue gills, and pumpkinseed. The lake will be open to tribal and non-tribal members for public recreational fishing. A boat launch and archery range will be established at the north end of the lake. The Priority Property will be open to tribal and non-tribal members for general public hunting.

C. Preventing Forest Fragmentation

If the Priority Property is sold in separate parcels to multiple private owners, it would fragment the forest landscape. By purchasing the Priority Property in its entirety, the Fond du Lac Band will prevent fragmentation of the 194 acres of forest habitat on the Property.

II. Restoring and Enhancing Forests, Prairie, and Wetlands on the Priority Property

The Fond du Lac Band will perform extensive restoration and enhancement activities to improve the quality of the forests, prairie, and wetlands on the Priority Property. The uplands on the Priority Property will be restored or enhanced as forests or prairie as follows:

Existing Cover Type	Restoration or Enhancement Activity	Resulting Cover	Acres Restored or Enhanced
Aspen	Plant 100 trees/acre of oak, yellow birch, paper birch, red maple, white pine, white spruce; protect plantings from deer; monitor.	Mixed hardwood/conifer forest enhanced	54
Forest/Upland Brush	Mechanically remove brush; plant 600 trees/acre of oak, yellow birch, paper birch, red	Mixed hardwood/conifer	65

	maple, white pine, white spruce; protect plantings from deer; monitor.	forest restored	
Brush	Mechanically remove brush; use prescribed burnings on 4-year rotation; plant with red oak, burr oak, red pine, and white pine.	Savanna restored	75
Grassland/Hay Fields	Prescribed burnings on 4-year rotation; plant with prairie seeds.	Native prairie restored	26

Twenty-one acres of wetlands will be restored and another 30 acres of wetlands will be enhanced at four areas of the Priority Property. This will be achieved by restoring the hydrologic flow by filling in ditches and removing compacted soil impeding waterflow. The wetlands will be managed to control invasive species.

III. Secondary Priority: Simian Creek Riparian Properties

Simian Creek flows north from the Priority Parcel for approximately 3.6 miles before its confluence with the St. Louis River. For 1.8 miles, Simian Creek flows through several properties in private ownership (the “Riparian Properties”). The Priority Parcel is the Fond du Lac Band’s top priority because of the urgency and multiple problems that its acquisition addresses. Protection of the Riparian Properties is still important because it provides for public control of the entire riparian corridor to the confluence with the St. Louis River. This will facilitate the management of the watershed to reduce even further sediment and nutrient loads into the St. Louis River.

IV. The Fond du Lac Band Has Substantial Expertise in Land Management and an Extensive History of Collaboration with Other Conservation Partners

The Fond du Lac Reservation’s boundary encompasses more than 101,000 acres, including 3,000 acres of lakes, nearly 44,000 acres of wetlands, 96 miles of rivers and streams, and over 28,000 acres of forests. The Fond du Lac Band has an annual budget of \$4 million to manage and conserve of its natural resources. In 2008, the Fond du Lac Band adopted an Integrated Resource Management Plan to guide its work and establish priorities. This project addresses the priorities of this Plan.

Since the 1990s, the Fond du Lac Band has worked closely with the Natural Resources Conservation Service to restore over 250 acres of wild rice habitat. The Band is an active participant in the restoration of the St. Louis River through its work with the citizens’ group St. Louis River Alliance and the National Oceanic and Atmospheric Administration’s Lake Superior National Estuarine Research Reserve. The Band has received grants from the U.S. Fish and Wildlife Service (“USFWS”) for lake sturgeon restoration, wild rice restoration, and moose population research. The Band partners with the Minnesota Department of Natural Resources (“DNR”) on a variety of activities, including fisheries and wildlife surveys.

LSOHC grant funds will not supplant existing funds in the Band’s budget. Instead, the grant funds will enable the Band to expand its conservation work and achieve long-standing priorities.

V. The Fond du Lac Band Does Not Anticipate Public Opposition to This Project and Will Coordinate with Conservation Partners

The Fond du Lac Band does not anticipate public opposition to this project. Access to the Priority Parcel and to the lake will be available to both tribal and non-tribal members for public fishing and hunting. The Band will manage the resources to sustain healthy fish and wildlife populations. The Band will coordinate this project

with other conservation partners, including DNR, NRCS, USFWS, and others. Attached are letters of support for this project.

Planning

MN State-wide Conservation Plan Priorities

- H2 Protect critical shoreland of streams and lakes
- H3 Improve connectivity and access to recreation
- H4 Restore and protect shallow lakes
- H5 Restore land, wetlands and wetland-associated watersheds
- H7 Keep water on the landscape
- LU8 Protect large blocks of forest land

Plans Addressed

- Lower St. Louis River Habitat Plan
- Managing Minnesota's Shallow Lakes for Waterfowl and Wildlife
- Minnesota DNR Strategic Conservation Agenda
- State Comprehensive Outdoor Recreation Plan
- 2008 Integrated Resource Management Plan, Fond du Lac Band of Lake Superior Chippewa

LSOHC Statewide Priorities

- Are ongoing, successful, transparent and accountable programs addressing actions and targets of one or more of the ecological sections
- Produce multiple enduring conservation benefits
- Are able to leverage effort and/or other funds to supplement any OHF appropriation
- Allow public access. This comes into play when all other things about the request are approximately equal
- Address conservation opportunities that will be lost if not immediately acted on
- Provide Minnesotans with greater public access to outdoor environments with hunting, fishing and other outdoor recreation opportunities
- Ensures activities for "protecting, restoring and enhancing" are coordinated among agencies, non profits and others while doing this important work
- Target unique Minnesota landscapes that have historical value to fish and wildlife

LSOHC Northern Forest Section Priorities

- Protect shoreland and restore or enhance critical habitat on wild rice lakes, shallow lakes, cold water lakes, streams and rivers, and spawning areas
- Protect forestland through acquisition or easement to prevent parcelization and fragmentation and to provide the ability to access and manage landlocked public properties
- Restore forest-based wildlife habitat that has experienced substantial decline in area in recent decades

Relationship to Other Constitutional Funds

none

Accelerates or Supplements Current Efforts

A LSOHC grant will not displace existing Fond du Lac Band funding for conservation and natural resource management. Instead, the LSOHC grant will enable the Band to accelerate and expand its conservation efforts. Since the 1990s, the Fond du Lac Band has done extensive conservation work near the Chi-wizo zaaga'iganing (Simian Lake) project area to protect the Stoney Brook sub-watershed of the St. Louis River. This conservation work includes restoring hundreds of acres of wild rice habitat on nearby lakes and is detailed in the Band's 2008 Integrated Resource Management Plan. Receiving the LSOHC grant will enable the Band to seize the unique opportunity that was created when the 440-acre property encompassing Chi-wizo zaaga'iganing (Simian Lake) was put up for sale. The Band will continue with its current restoration efforts on wild rice lakes and its other conservation efforts in the Stoney Brook sub-watershed.

Sustainability and Maintenance

The Fond du Lac Band has the personnel and financial resources to manage properly the 720 acres that will be acquired, restored, and enhanced through this project. The Fond du Lac Band has a \$4 million annual budget for natural resources management. Its natural resources staff includes 62 full-time employees and 30-40 seasonal staff, who are responsible for managing 100,000 acres within the Fond du Lac Reservation and for providing conservation services throughout historic Chippewa territories in Wisconsin and Michigan. The existing staff will be able to integrate the responsibilities for the project area into its work assignments. The Band's staff includes a Forester, Fisheries Biologist, Wildlife Biologist, Wetlands Specialist, Watershed Specialist, and Natural Resources Manager, who together will develop a stewardship plan for the project area, including protocol for controlling invasive species and conducting prescribed burns. In addition to its own funds, the Band will seek grants from NRCS, FWS, and U.S. EPA, which have awarded the Fond du Lac Band grants in the past for conservation work.

Will local government approval be sought prior to acquisition? - **Yes**

Is the land you plan to acquire free of any other permanent protection? - **Yes**

Is this land open for hunting and fishing? - **Yes**

The land to be acquired will be open to the general public for fishing and hunting. There will be no variation from State of Minnesota regulations.

Is the activity on permanently protected land and/or public waters per MS 103G.005, Subd. 15? - **Yes (Tribal lands)**

Accomplishment Timeline

Activity	Approximate Date Completed
Negotiate with the landowner of the 440-acre Priority Property encompassing Chi-wizo zaagaiganing (Simian Lake) and enter into a purchase agreement	August 1, 2013
Complete due diligence for the acquisition of the Priority Property	November 1, 2013
Negotiate with the landowners of the Riparian Properties and enter purchase agreements	December 1, 2013
Acquire fee title to the Priority Property	February 1, 2014
Complete due diligence for the acquisition of the Riparian Properties	April 1, 2014
Develop Forest, Prairie, and Wetland Restoration and Enhancement Plan for the	June 1, 2014

Priority Property	
Begin implementing the Restoration and Enhancement Plan for the Priority Property	September 1, 2014
Acquire fee title to the Riparian Properties	December 1, 2014
Complete implementation of the Restoration and Enhancement Plan for the Priority Property	July 1, 2018

Outcomes

Programs in the northern forest region

- Forestlands are protected from development and fragmentation
- Healthy populations of endangered, threatened, and special concern species as well as more common species
- Improved aquatic habitat indicators
- Increased availability and improved condition of riparian forests and other habitat corridors

Budget Spreadsheet

Total Amount of Request: \$2,476,000

Budget and Cash Leverage

Budget Name	LSOHC Request	Anticipated Cash Leverage	Cash Leverage Source	Total
Personnel	\$0	\$557,400	-	\$557,400
Contracts	\$146,000	\$0	-	\$146,000
Fee Acquisition w/ PILT	\$0	\$0	-	\$0
Fee Acquisition w/o PILT	\$2,310,000	\$0	-	\$2,310,000
Easement Acquisition	\$0	\$0	-	\$0
Easement Stewardship	\$0	\$0	-	\$0
Travel (in-state)	\$0	\$0	-	\$0
Professional Services	\$17,000	\$17,000	FDL Band	\$34,000
Direct Support Services	\$0	\$0	-	\$0
DNR Land Acquisition Costs	\$0	\$0	-	\$0
Capital Equipment	\$0	\$0	-	\$0
Other Equipment/Tools	\$0	\$0	-	\$0
Supplies/Materials	\$3,000	\$0	-	\$3,000
DNR IDP	\$0	\$0	-	\$0
Total	\$2,476,000	\$574,400	-	\$3,050,400

Personnel

Position	FTE	Over # of years	LSOHC Request	Anticipated Cash Leverage	Cash Leverage Source	Total
Fisheries Biologist	0.20	5.00	\$0	\$54,000	Fond du Lac Band	\$54,000
Wildlife Biologist	0.20	5.00	\$0	\$54,000	Fond du Lac Band	\$54,000
Natural Resources Manager	0.15	5.00	\$0	\$58,500	Fond du Lac Band	\$58,500
Forester	0.15	5.00	\$0	\$45,000	Fond du Lac Band	\$45,000
Fire Crew Supervisor	0.20	5.00	\$0	\$38,400	Fond du Lac Band	\$38,400
Fire Crew (3)	0.60	5.00	\$0	\$90,000	Fond du Lac Band	\$90,000
Watershed Specialist	0.20	5.00	\$0	\$42,000	Fond du Lac Band	\$42,000
Conservation Officers (3)	0.20	5.00	\$0	\$126,000	Fond du Lac Band	\$126,000
Wetland Specialist	0.30	5.00	\$0	\$49,500	US EPA	\$49,500
Total	2.20	45.00	\$0	\$557,400	-	\$557,400

Capital Equipment

Item Name	LSOHC Request	Anticipated Cash Leverage	Cash Leverage Source	Total
Total	\$0	\$0	-	\$0

Output Tables

Table 1. Acres by Resource Type

Type	Wetlands	Prairies	Forest	Habitats	Total
Restore	0	0	0	0	0
Protect in Fee with State PILT Liability	0	0	0	0	0
Protect in Fee W/O State PILT Liability	83	26	251	360	720
Protect in Easement	0	0	0	0	0
Enhance	0	0	0	0	0
Total	83	26	251	360	720

Table 2. Total Requested Funding by Resource Type

Type	Wetlands	Prairies	Forest	Habitats	Total
Restore	\$0	\$0	\$0	\$0	\$0
Protect in Fee with State PILT Liability	\$0	\$0	\$0	\$0	\$0
Protect in Fee W/O State PILT Liability	\$361,000	\$113,000	\$1,094,000	\$908,000	\$2,476,000
Protect in Easement	\$0	\$0	\$0	\$0	\$0
Enhance	\$0	\$0	\$0	\$0	\$0
Total	\$361,000	\$113,000	\$1,094,000	\$908,000	\$2,476,000

Table 3. Acres within each Ecological Section

Type	Metro/Urban	Forest/Prairie	SE Forest	Prairie	Northern Forest	Total
Restore	0	0	0	0	0	0
Protect in Fee with State PILT Liability	0	0	0	0	0	0
Protect in Fee W/O State PILT Liability	0	0	0	0	720	720
Protect in Easement	0	0	0	0	0	0
Enhance	0	0	0	0	0	0
Total	0	0	0	0	720	720

Table 4. Total Requested Funding within each Ecological Section

Type	Metro/Urban	Forest/Prairie	SE Forest	Prairie	Northern Forest	Total
Restore	\$0	\$0	\$0	\$0	\$0	\$0
Protect in Fee with State PILT Liability	\$0	\$0	\$0	\$0	\$0	\$0
Protect in Fee W/O State PILT Liability	\$0	\$0	\$0	\$0	\$2,476,000	\$2,476,000
Protect in Easement	\$0	\$0	\$0	\$0	\$0	\$0
Enhance	\$0	\$0	\$0	\$0	\$0	\$0
Total	\$0	\$0	\$0	\$0	\$2,476,000	\$2,476,000

Table 5. Target Lake/Stream/River Miles

16 miles

Parcel List

Section 1 - Restore / Enhance Parcel List

St. Louis

Name	TRDS	Acres	Est Cost	Existing Protection?
Priority Property (Simian Lake Property)	05017229	271	\$150,000	No

Section 2 - Protect Parcel List

St. Louis

Name	TRDS	Acres	Est Cost	Existing Protection?	Hunting?	Fishing?
Priority Property (Simian Lake Property)	05017229	440	\$1,750,000	No	Full	Full
Riparian Properties	05017220	280	\$560,000	No	Full	Full

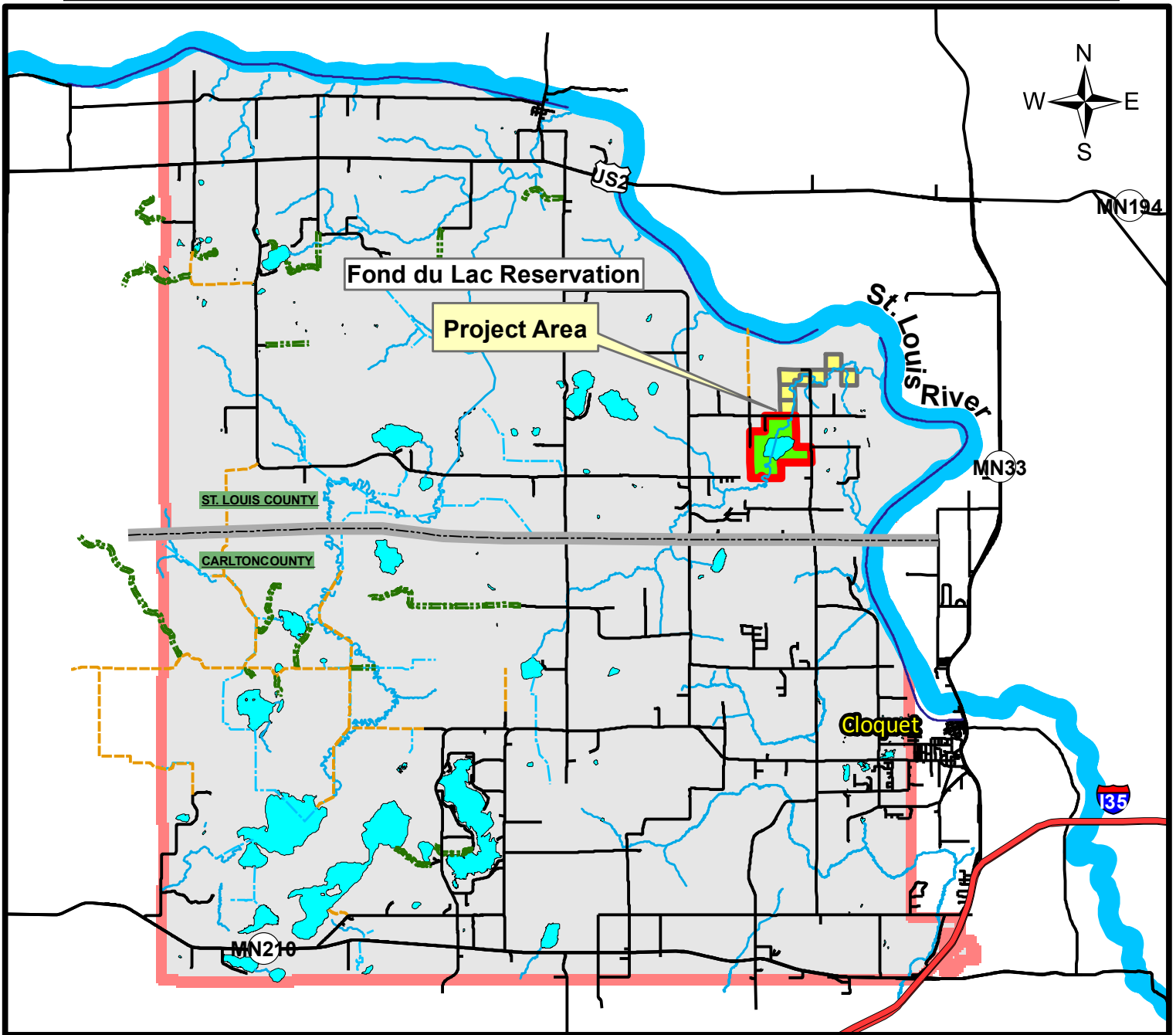
Section 2a - Protect Parcel with Bldgs

No parcels with an activity type protect and has buildings.

Section 3 - Other Parcel Activity

No parcels with an other activity type.

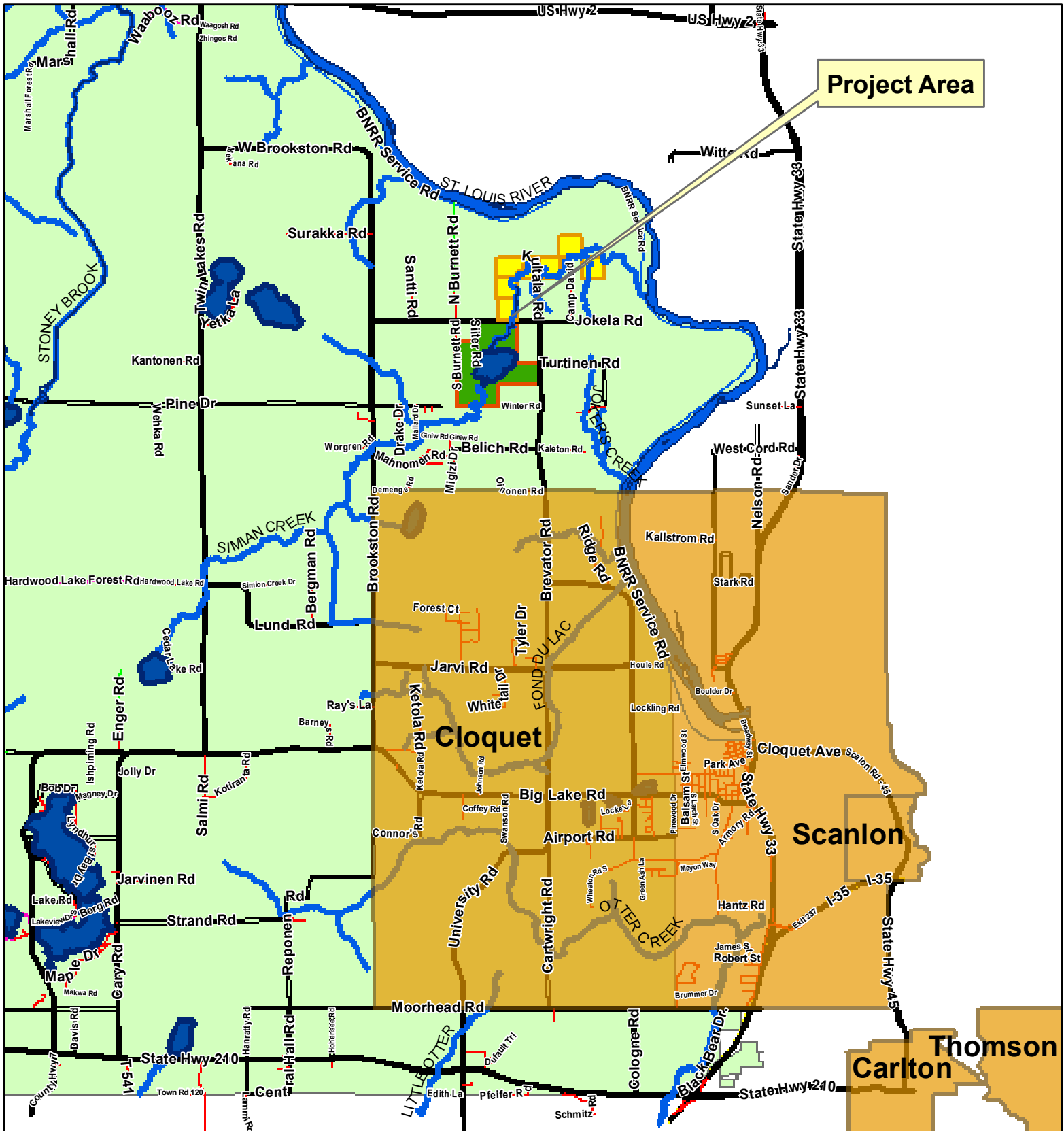
Project Location



Legend

- Priority Property
- Riparian Properties
- Reservation Boundary
- County Boundary
- Lakes
- Streams

Project Region



Legend

- Cities
- Riparian Properties
- Priority Property
- Fond du Lac Reservation

UTM NAD 83 Zone 15
FDL Resource Management
FDL Forestry
218 878 7146

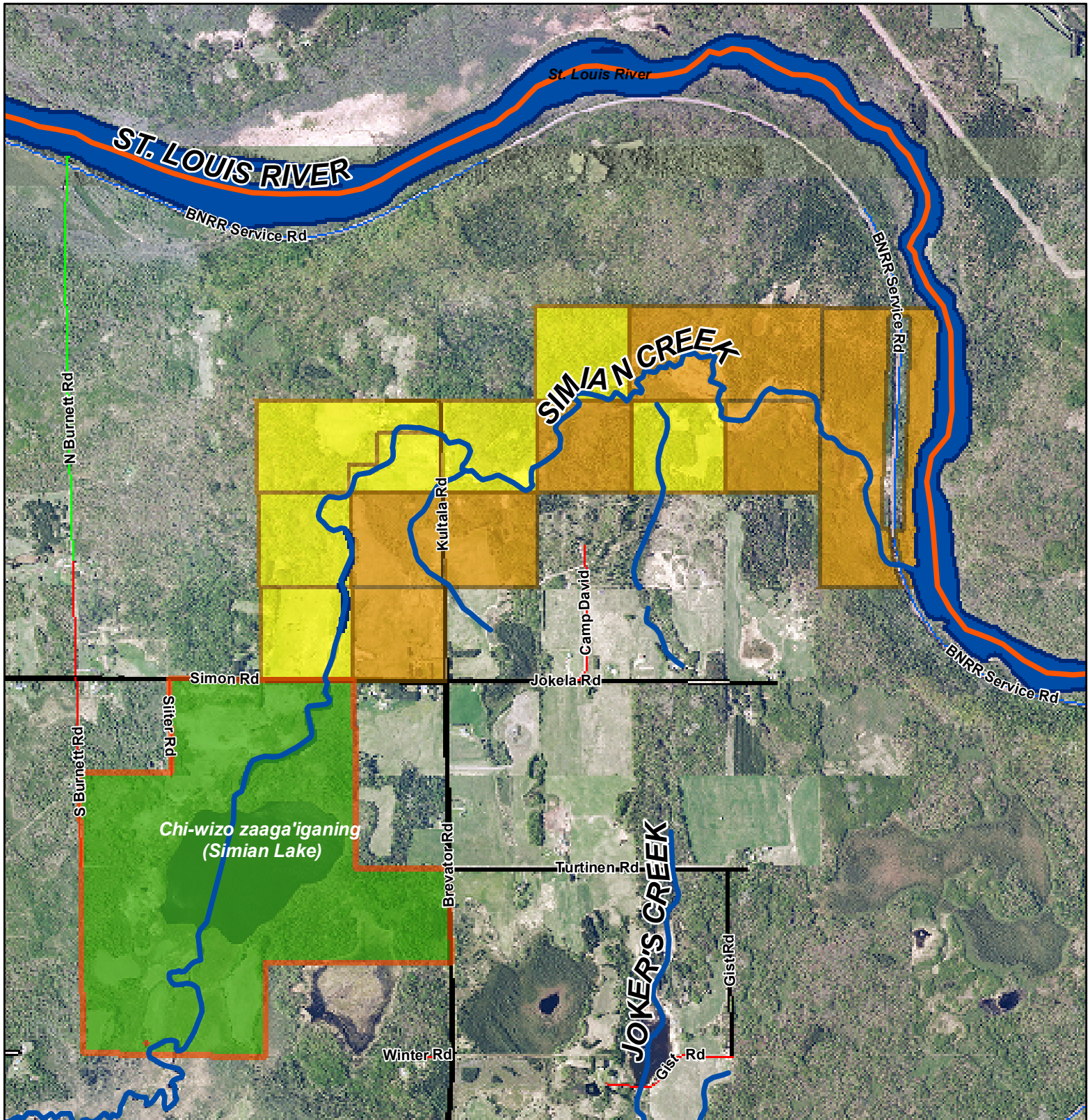
0 0.5 1 Miles



Disclaimer:
FDL makes no representations about the suitability of this map for any purpose. The map is provided 'as is' without express or implied warranties, including warranties of merchantability and fitness for a particular purpose or no infringement.



Aerial Map of Project Area



Legend

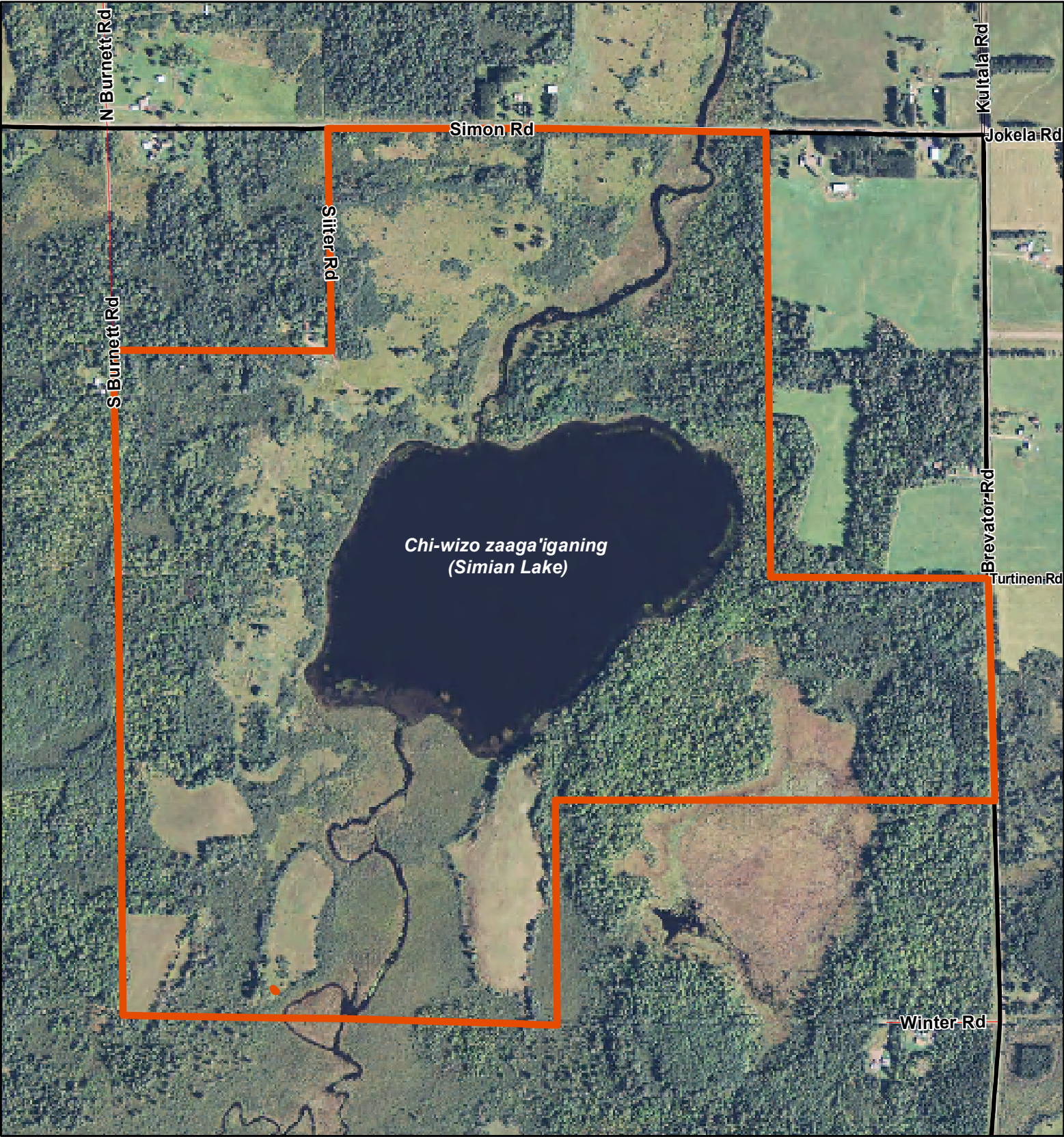
- Fond du Lac Properties
- Riparian Properties (280 acres)
- Priority Property (440 acres)

1:22,588

UTM NAD 83 Zone 15
FDL Resource Management
FDL Forestry
218 878 7146

Disclaimer:
FDL makes no representations about the suitability of this map for any purpose. The map is provided 'as is' without express or implied warranties, including warranties of merchantability and fitness for a particular purpose or no infringement.

Priority Property Aerial



0 0.125 0.25 Miles

UTM NAD 83 Zone 15
FDL Resource Management
FDL Forestry
218 878 7146

1:9,366



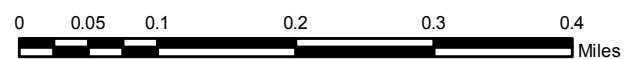
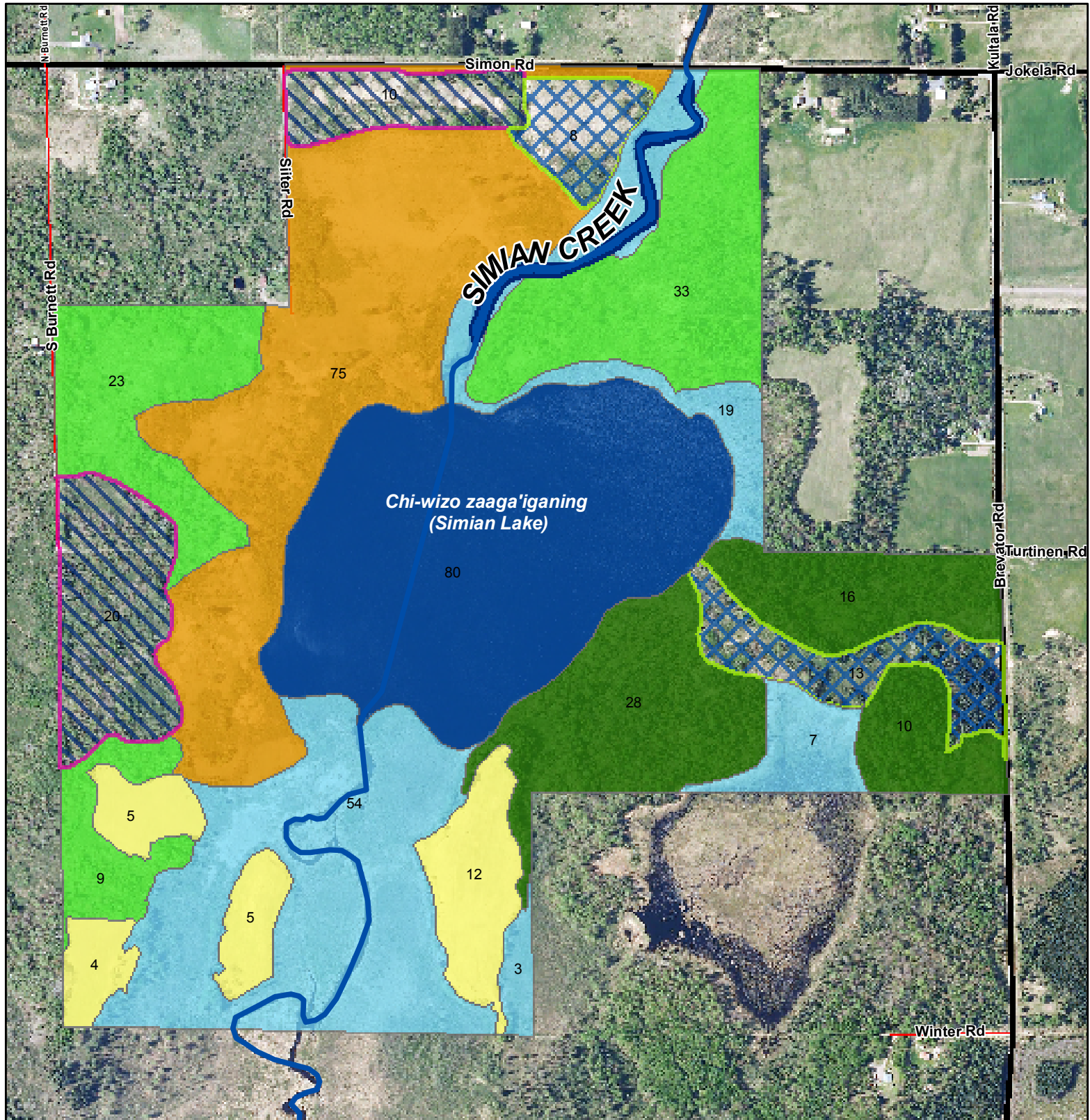
Legend

 Property Boundary

Disclaimer:
FDL makes no representations about the suitability of this map for any purpose. The map is provided
'as is' without express or implied warranties, including warranties of merchantability and fitness for a particular
purpose or no infringement.



Priority Property Restoration and Enhancement Plan



UTM NAD 83 Zone 15
FDL Resource Management
FDL Forestry
218 878 7146
1:8,803

Legend

Forest

- Aspen 54 acres
- Brushland 65 acres
- Prairie 26 acres
- Savanna 75 acres

Wetlands

- Restoration 21 acres
- Enhancement 30 acres
- Other Wetlands 83 acres
- Lake 80 acres



June 25, 2012

Lessard-Sams Outdoor Heritage Council
100 Rev. Dr. Martin Luther King Jr. Blvd.
State Office Building, Room 95
St. Paul, MN 55155

Re: Grant Application of the Fond du Lac Band to the Lessard-Sams Outdoor
Heritage Council

To Members of the Council:

I am writing to strongly support the Lessard-Sams Outdoor Heritage Council grant application submitted by the Fond du Lac Band of Lake Superior Chippewa. The project put forth by the Fond du Lac Band will protect and restore lake and stream habitat in the St. Louis River watershed and complement the extensive restoration work ongoing in the St. Louis River.

As you know, the Minnesota Department of Natural Resources is engaged in the St. Louis River Restoration Initiative, which is a programmatic approach to restoring aquatic, wetland, and terrestrial habitats within the Lower St. Louis River over the next 15-20 years. I am extremely grateful for the substantial financial support that the Lessard-Sams Outdoor Heritage Council has provided for this initiative. The proposed project fits in with this initiative.

The Fond du Lac Band of Lake Superior Chippewa is one of our partner agencies on the St. Louis River Restoration Initiative. The Fond du Lac Band's project will protect forests, wetlands, and aquatic/riparian habitat in the Simian Creek watershed of the St. Louis River. By preventing development on Simian Lake and along the Simian Creek corridor, the Fond du Lac Band's project will prevent additional nutrient and sediment loads into the main stem of the St. Louis River. Furthermore, the development of a public access will provide the public with another fishing opportunity that is not currently available.

Again, I thank the Council for its support of St. Louis River Restoration Initiative and urge the Council to fund the project submitted by the Fond du Lac Band.

Sincerely,



Nick Frohnauer
Minnesota Department of Natural Resources - Fisheries
Duluth Area Assistant Supervisor

United States Department of Agriculture



Natural Resources Conservation Service
4850 Miller Trunk Hwy. Suite 2B
Duluth, MN 58101-1520

Telephone (218) 720 - 5209

Fax (218) 720 - 3129

June 27, 2012

Lessard-Sams Outdoor Heritage Council
100 Rev. Dr. Martin Luther King Jr. Blvd.
State Office Building, Room 95
St. Paul, MN 55155

Re: Grant Application of the Fond du Lac Band to the Lessard-Sams Outdoor
Heritage Council

To Members of the Council:

I am writing in support of the Lessard-Sams Outdoor Heritage Council (LSOHC) grant application submitted by the Fond du Lac Band of Lake Superior Chippewa. The project put forth by the Fond du Lac Band will protect and restore habitat in the St. Louis River watershed and support the extensive restoration work ongoing in the St. Louis River.

The Natural Resources Conservation Service (NRCS) and the Fond du Lac Band have worked cooperatively together over the past several years on the Fond du Lac Water Management Project to conduct a hydrological assessment of Stoney Brook watershed, which is a sub-watershed of the St. Louis River. In our work together, we examined ways to optimize water levels for wild rice production in five wild rice lakes and how to reverse the damage from early ditching done in the area nearly a century ago. Based on the effectiveness of our working relationship, I am confident in the technical skill and expertise of the Fond du Lac Band to implement the project before the LSOHC.

The Fond du Lac Band's project to purchase the 440-acre Simian Lake Property and nearly 300 additional acres along the Simian Creek will be a valuable addition to the conservation work in the St. Louis River watershed. I request the Council support the Band's grant application.

Sincerely,

A handwritten signature in cursive script that reads "Dan Weber".

Dan Weber
District Conservationist
USDA – Natural Resources Conservation Services



St. Louis River Alliance
394 Lake Avenue South, Suite 321
Duluth, Minnesota 55802-2338
Phone: 218-733-9520
Fax: 218-723-4794
E-mail: slrcac@StLouisRiver.org
Web: StLouisRiver.org

June 25, 2012

Lessard-Sams Outdoor Heritage Council
100 Rev. Dr. Martin Luther King Jr. Blvd.
State Office Building, Room 95
St. Paul, MN 55155

Re: Grant Application of the Fond du Lac Band

Members of the Council:

I am writing to express the strong support of the St. Louis River Alliance for the grant application to the Lessard-Sams Outdoor Heritage Council by the Fond du Lac Band of Lake Superior Chippewa.

The St. Louis River Alliance is a nonprofit organization that serves as the official citizens advisory committee for the St. Louis River Area of Concern. The Alliance works closely with local, state and federal agencies along with other area non-governmental agencies in a wide variety of efforts and activities intended to restore, protect and delist the St. Louis River as an area of concern.

The Fond du Lac Band has been a valuable partner for the St. Louis River Alliance in promoting the restoration of St. Louis River. A Resource Management Division staff member of the Fond du Lac Band sits on our Board of Directors. The Fond du Lac Band's expertise in water quality, land management, and wetland and wild rice habitat is widely recognized throughout the St. Louis River watershed.

The RAP for the St. Louis River Area of Concern notes that over 90 percent of the nutrient loading in the St. Louis River is from nonpoint sources, such as runoff from land in the watershed. By protecting hundreds of acres of forest, lake, wetlands, and stream habitat, the Fond du Lac Band's project will prevent additional nutrient loading into the St. Louis River and directly advance the objectives of the RAP.

Please feel free to contact me, if you have any questions regarding this letter of support.

Sincerely,

Julene Boe

Executive Director

*Working together to restore, protect and enhance the St. Louis River,
its watershed and western Lake Superior.*

UNIVERSITY OF MINNESOTA

Twin Cities Campus

*College of Food, Agricultural and Natural
Resource Sciences*

Cloquet Forestry Center

*175 University Rd.
Cloquet, MN 55720*

*Office: 218-726-6400
Fax: 218-726-6488
<http://cfc.cfans.umn.edu>
Email: cfc@umn.edu*

June 25, 2012

Lessard-Sams Outdoor Heritage Council
100 Rev. Dr. Martin Luther King Jr. Blvd.
State Office Building, Room 95
St. Paul, MN 55155

Re: Grant Application of the Fond du Lac Band

To the Members of the Lessard-Sams Outdoor Heritage Council:

I am writing in support of the Lessard-Sams Outdoor Heritage Council grant application submitted by the Fond du Lac Band of Lake Superior Chippewa.

I serve as the Director of Operations at the University of Minnesota's Cloquet Forestry Center, which is located within the boundaries of the Fond du Lac Reservation. With over 3,500 acres, the Center is the University's primary research and education forest. The Center has operated for over 100 years and is the longest continuously operating forestry field station in the United States.

One of the greatest challenges to the forests of northern Minnesota is fragmentation. The Fond du Lac Band's project before the Lessard-Sams Outdoor Heritage Council, which, if funded, would result in the Band's purchase of 440 acres surrounding Simian Lake, including 214 acres of forest, will help prevent further forest fragmentation. As the economy improves, there will be increasing pressure on these larger properties to be sold and subdivided. This fragmentation typically reduces the quality of wildlife habitat and makes it increasingly difficult to manage the forest sustainably.

I strongly endorse the Fond du Lac Band's grant application and request that approve funding for this outstanding project.

Sincerely,



Carrie Pike,
Interim Director of Operations

Lake Superior National Estuarine Research Reserve

14 Marina Dr., P. O. Box 2000
University of Wisconsin-Superior
Superior, WI 54880

June 25, 2012

Lessard-Sams Outdoor Heritage Council
100 Rev. Dr. Martin Luther King Jr. Blvd.
State Office Building, Room 95
St. Paul, MN 55155

Re: Lessard-Sams Outdoor Heritage Council Grant Application of the Fond du Lac Band

Members of the Council:

I am writing to express my support for the grant application to the Lessard-Sams Outdoor Heritage Council by the Fond du Lac Band of Lake Superior Chippewa.

The Lake Superior National Estuarine Research Reserve (NERR) was established by the National Oceanic and Atmospheric Administration (NOAA) in 2010 as only the second NERR in the Great Lakes. The Lake Superior NERR conducts research, monitoring, education, outreach, training, and stewardship with respect to the interaction of the St. Louis River and Lake Superior. Land use conditions in both Minnesota and Wisconsin have an impact on the ecological health of the St. Louis River and Lake Superior.

The Fond du Lac Band's technical knowledge of land use and water quality issues is widely known throughout the St. Louis River watershed in both Minnesota and Wisconsin. Fond du Lac Band Resource Management staff Kari Hedin and Rick Gitar were integral participants in developing the Management Plan for the Lake Superior NERR and currently sit on our advisory council.

Objective 6 in our Management Plan is to conduct stewardship activities that protect and enhance the ecological health of the Lake Superior Reserve. The Fond du Lac Band's project to be funded through the Outdoor Heritage Fund will aid in achieving this objective.

In conclusion, Lake Superior NERR staff have been greatly impressed with the resource management capabilities of the Fond du Lac Band and I strongly urge the Lessard-Sams Outdoor Heritage Council to give the Band's application their full support.

Sincerely,

Ralph J. Garono
Reserve Manager
Lake Superior National Estuarine Research Reserve



June 27, 2012

Lessard-Sams Outdoor Heritage Council
100 Rev. Dr. Martin Luther King Jr. Blvd.
State Office Building, Room 95
St. Paul, MN 55155

Re: Fond du Lac Band Grant Application to the Lessard-Sams Outdoor
Heritage Council

To Members of the Lessard-Sams Outdoor Heritage Council:

I am writing in support of the Lessard-Sams Outdoor Heritage Council grant application submitted by the Fond du Lac Band of Lake Superior Chippewa. As one of the partners in the St. Louis River Restoration Initiative, the Fond du Lac Band's efforts to protect and restore vital aquatic habitats within the St. Louis River watershed are important to the health of the River and western Lake Superior. The Fond du Lac Band's goals for the Simian Creek project of preventing additional nutrient and sediment loading, protecting the forests, wetlands and riparian habitat and providing public access to the protected lands are both consistent with numerous state and regional conservation plans and beneficial to the long term health of the St. Louis River.

On behalf of the Land Trust, I want to thank you for your consideration of this project.

Best regards,

A handwritten signature in dark ink, appearing to be "Kris Larson", with a long horizontal flourish extending to the right.

Kris Larson
Executive Director



W.J. McCABE (DULUTH) CHAPTER IZAAK WALTON LEAGUE OF AMERICA

P.O. Box 3063 • DULUTH, MN 55803

June 25, 2012

Lessard-Sams Outdoor Heritage Council
100 Rev. Dr. Martin Luther King Jr. Blvd.
State Office Building, Room 95
St. Paul, MN 55155

Re: Grant Application of the Fond du Lac Band

To the Members of the Lessard-Sams Outdoor Heritage Council:

I am writing in support of the Lessard-Sams Outdoor Heritage Council grant application submitted by the Fond du Lac Band of Lake Superior Chippewa.

I am President of the Izaak Walton League's W.J. McCabe Chapter based in Duluth. Founded in 1922, the mission of the Izaak Walton League is:

"To conserve, maintain, protect and restore the soil, forest, water and other natural resources of the United States and other lands; to promote means and opportunities for the education of the public with respect to such resources and their enjoyment and wholesome utilization."

The Fond du Lac Band's project fits very well within our mission. The project would result in the Band's purchase of 440 acres surrounding the 80-acre Simian Lake and restore wetlands and wild rice habitat. This lake is currently privately owned and not open to the public. The Band will make the lake open to the general public (both tribal and non-tribal members) for fishing and hunting. A boat launch will be built on the northern end of the lake to facilitate fishing and the lake will be limited to non-motorized or electric motor boating.

The 440-acre property contains approximately 214 acres of forest, and acquisition by the Fond du Lac Band will prevent the fragmentation of these woods, which remains an ongoing threat to the northern forests of Minnesota. In addition, the project will protect approximately 300 additional acres following the course Simian Creek until its confluence with the St. Louis River; thereby, further helping protect the water quality of the main stem of the St. Louis River.

The W.J. McCabe Chapter of the Izaak Walton League strongly endorses the Fond du Lac Band's grant application and requests that the LSOHC approve funding for this outstanding project.

Sincerely,

Brent Gurtek, President
Izaak Walton League
W.J. McCabe Chapter

Proposal of the Fond du Lac Band of Lake Superior Chippewa



Photograph 1: View of Simian Creek from the north shore of Chi-wizo zaaga'iganing (Simian Lake) looking to the north.

Proposal of the Fond du Lac Band of Lake Superior Chippewa



Photograph 2: View from the north shore of Chi-wizo zaaga'iganing (Simian Lake) looking to the southeast.

Proposal of the Fond du Lac Band of Lake Superior Chippewa



Photograph 3: View looking to the east at the northeast shoreline of Chi-wizo zaaga'iganing.

Proposal of the Fond du Lac Band of Lake Superior Chippewa



Photograph 4: View of upland areas north of Chi-wizo zaaga'iganing (Simian Lake) looking to the northwest.

Proposal of the Fond du Lac Band of Lake Superior Chippewa



Photograph 5: Site of the future boat launch at the north shore of Chi-wizo zaaga'iganing (Simian Lake).